

The White Horse

Wanderer

The magazine of The White Horse branch of CAMRA

Spring 2025

Issue 5

FREE - Please take one





WHITE
HORSE

HELLO & WELCOME

Letter from the Editor

Welcome to the latest edition of the White Horse Wanderer and I hope that you enjoy reading it as much as we enjoyed putting it together!

This edition appears both online on our website and as a printed copy in many local pubs. If you'd like some more copies for your local, please get in touch and we'll get some to you.

We were planning on getting this issue out before Christmas last year, but the savage storms that battered the country had adverse effects on both our contributors and their suppliers, so rather than rush the issue out, we decided to wait until spring. We've had branch socials and pub crawls, pubs closing and pubs reopening and some great additions to the Good Beer Guide for 2025, so read on to discover what we've been up to.

The last few months continue to show us that our branch needs a real boost of active members to move forward in the years to come. There are loads of benefits to becoming a CAMRA member, and the social side is great fun too!

As we go to press, our local pubs and breweries are starting to plan their calendar for a huge list of events this year. Now that the miserable weather is (hopefully) out of the way for a few months, we can expect festivals galore!

You'll notice that this issue also includes some advertisements from establishments in our local area. If you'd like to advertise in our next issue, please get in touch. A rate card with more information can be found further on in this magazine.

This lovely spring weather gives us all the perfect opportunity to get out and visit some of the many excellent pubs in the White Horse area. With beer garden weather more likely every day, and the promise of a cool pint of excellent ale on the horizon, grab your friends and family and head to the pub.

Finally, if you have any news which you'd like including in the next issue, or on our Facebook page, please get in touch using the email address below.

And remember - your local pub needs you!

GET IN TOUCH

Please send all news and events details to:
press@whitehorse.camra.org.uk

The branch website can be found at
www.whitehorse.camra.org.uk



WHCAMRA



@WHCAMRA





THE BLUE BOAR WANTAGE



HAPPY Easter

At The Blue Boar we are passionate and proud to provide the best service in town. Located in the town center, with a hidden gem of suntrap garden, the pub is family and dog friendly, and wheelchair accessible, all while offering table service whether you are sitting inside or out.

The Blue Boar has a welcoming atmosphere, whatever the time or day, with a guest DJ once a month, bringing a party vibe, and, during the summer, live music events are held in the garden.

There is something for everyone here! A large variety of premium wines, craft beers, lagers, ales, traditional ciders and spirits are offered along with a extensive cocktail and mocktail menu.

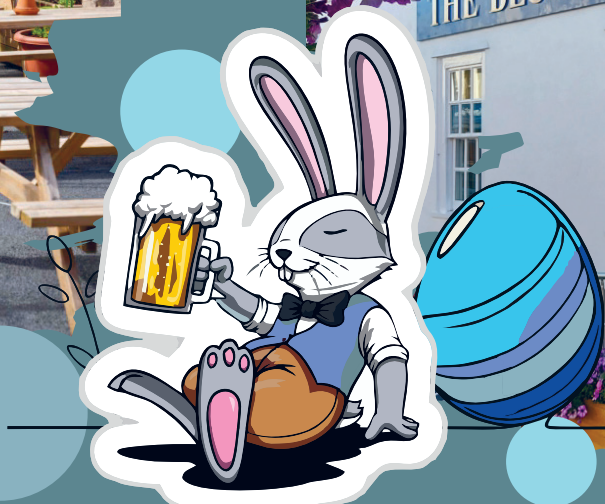
We can also make the bar and garden available for private bookings. And the New function room opening soon.

Come along and see for yourself.

NEW FUNCTION ROOM
OPENING
SOON



**WE ARE
OPEN**
MONDAY- THURSDAY
15:00-23:00
FRIDAY-SATURDAY
12:00-00:00
SUNDAY
12:00-22:00



CAMRA GOOD BEER GUIDE 2025

It's always tricky deciding which pubs to include in the Good Beer Guide, but the research is definitely fun! Here's our pick of the eight pubs that made it in to the 2025 guide.



WHITE HORSE PUBS IN THE GOOD BEER GUIDE

The Plough, West Hanney
(page 353)

The Greyhound, Letcombe Regis
(page 349)

The Kings Arms, Wantage
(page 352)

The Shoulder, Wantage
(page 352)

The Blue Boar, Wantage
(page 352)

The Royal Oak, Wantage
(page 352)

The Rose and Crown, Ashbury
(page 346)

The North Star, Steventon
(page 351)

If you haven't got your copy yet, it's available at all good bookshops and online at shop1.camra.org.uk or check it out at one of the featured pubs.

THE PLOUGH

CHURCH ST, WEST HANNEY,
WANTAGE OX12 0LN



A friendly, 16th-century thatched pub that is the hub of the community. Sold in 2015 by Punch Taverns to a local community group, it has been refurbished and serves four changing beers. It has a cosy, beamed and alcoved split-level bar with an open fire, and there is a separate dining room serving traditional British food.

THE GREYHOUND

MAIN ST, LETCOMBE REGIS, WANTAGE
OX12 9JLOX12 0LN



Large, welcoming pub in the centre of the village. Inside is a single bar, with dining areas and an original inglenook fireplace. Locally sourced home-cooked food and four constantly changing handpumped beers are available. The garden hosts outdoor dining during the summer months.

THE KINGS ARMS

39 WALLINGFORD STREET WANTAGE
OX12 8AU



A friendly, open-plan pub with polished wooden floors and panelling. It was given a new lease of life when refurbished by owners Oak Taverns in 2020. Six handpumps adorn the bar, serving constantly changing beers, with six ciders also available. There is a large, sloping garden at the rear, with tables and chairs for drinkers. Local CAMRA Pub of the Year and local CAMRA Cider Pub of the Year 2024.

THE SHOULDER

38 WALLINGFORD STREET, WANTAGE
OX12 8AX



Friendly and popular Victorian corner pub just a short walk from the town centre, serving five constantly changing beers on handpump to suit all tastes. The interior was redesigned in late 2022 to allow greater space for customers. There is an open mic night every Tuesday evening. Former local, county and regional CAMRA Pub of the Year.

THE BLUE BOAR

4 NEWBURY ST, WANTAGE
OX12 8BS

Extensively refurbished by the new owner, this spacious town-centre pub has two changing real ales and changing craft ales too. A friendly, pleasant pub with a convivial atmosphere. Winner of local CAMRA award for Most Improved Pub 2023.



This multi award-winning street-corner pub is a mecca for the discerning drinker. All beers are served by gravity, along with traditional ciders and perries. Multiple local CAMRA Pub of the Year winner, and local Cider Pub of the Year in 2022.

THE ROYAL OAK

NEWBURY ST, WANTAGE OX12 8DF

THE ROSE AND CROWN

3 HIGH STREET, ASHBURY
SN6 8NA

This welcoming 16th-century coaching inn nestles at the foot of the White Horse Downs, within a mile of The Ridgeway, in the centre of the scenic village of Ashbury. It is a comfortable village pub offering a range of beers sourced locally from Arkell's brewery, with 3Bs being especially popular. Food is sourced from local suppliers, and accommodation is also available.



Identified by CAMRA as having a nationally important historic pub interior, this Grade II listed pub is next to The Causeway, and is a listed ancient monument. Inside are two bars, an open fireplace, and a separate function room. Three beers are served by gravity and presented through a stable door or hatch. Not to be missed.

THE NORTH STAR

2 STOCKS LANE, STEVENTON,
OX13 6SG

CONGRATULATIONS TO ALL OUR LOCAL PUBS!

Tuesday 11th March 2025 - Branch meeting at **The Cherry Tree, Steventon** 7.45pm

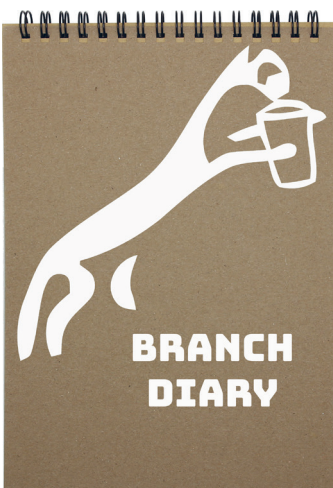
Tuesday 8th April 2025 - Branch AGM at **The Royal Oak, Wantage** 7.30pm

Friday 11th & Saturday 12th April 2025 - Beer Festival at **The Plum Pudding, Milton**
(This is outside of the White Horse CAMRA area but well worth checking out!)

Tuesday 13th May 2025 - Branch meeting at **The Old Crown Coaching Inn, Faringdon**, 7.45pm

Saturday 24th & Sunday 25th May 2025 - Branch supported Cider Festival at **The Kings Arms, Wantage**

Friday 20th - Sunday 22nd June 2025 - Branch supported Summer Beer Festival at **The Kings Arms, Wantage**



BOSLEY'S BANTER

WHAT HAS THE ROYAL FAMILY DONE FOR US?

Originally appearing in the Pub History Society magazine, Dick Bosley explores what the Royal Family has done for us and real ale in the third part of our series looking at the 16th and 17th centuries. Look out for part four in the next issue!

Mary (1553 - 58) appears to have been less interested in beer other than ruling that, to conserve supplies, beer should not be exported. In turn her half sister, **Elizabeth** (1558 - 1603,) as well as being one of the first European women to wear high heels, was known to have been quite keen on a pint or two. Following a visit from the queen the Earl of Leicester wrote that *'her own beer was so strong as tyhere was no man able to drink it'*. However she later ruled, in 1560, that brewers should no longer make the very strong double-double ale (that was more profitable for them) and that they make as much of the weaker single ale as they did of

the double.

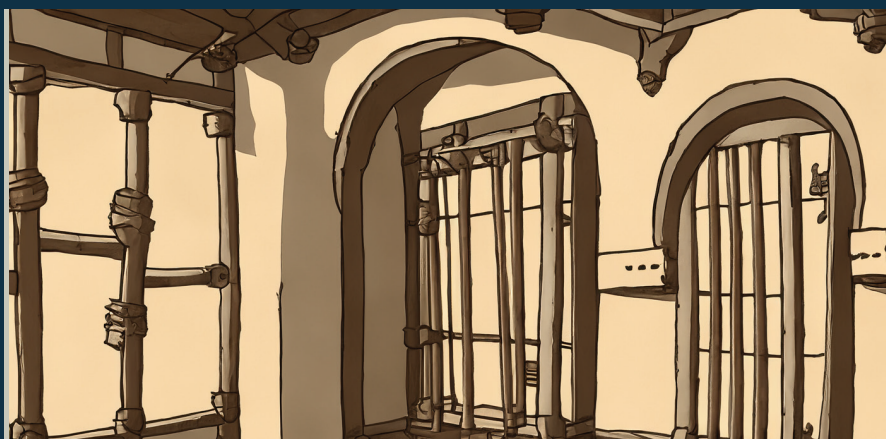
It was not only drink that was causing officialdom problems - in 1567 more than a quarter of those charged with keeping an unlicensed ale house were also charged with keeping a brothel. This led to attempts to suppress more than 200 alehouses in London.

At the time of Elizabeth's reign a census of 1577 shows 19756 alehouses, taverns and inns in England and Wales. Elizabeth also granted a new charter to the Brewers Company in 1560, and again in 1563. There is also the first reference to bottled beer, in 1600, during her reign.



Curiously the first temperance society was also formed in 1600 - the Order of Temperance - whose rules stated that members undertook 'not to drink more than seven glasses of alcoholic liquor at one time, and not more than twice a day'.

James I (1603 - 25) as well as combining the thrones of England and Scotland gave us the pub name Crown & Thistle and derivatives thereof.



An early Act (1603) defined the 'ancient, true and principal use of inns' which included 'are not meant for entertainment and harbouring of lewd idle people, to spend and consume their time and their money in lewd and drunken manner'.

The following year another act required parish constables to inspect all ale houses to ensure that they were conducted properly. The proprietors were to be fined if customers were allowed to stay too long - no workman was in

town to stay longer than an hour at dinnertime. This was extended in 1606 to make customers liable to fines as well. For staying too long the penalty was three shillings and four pence, or four hours in the stocks, and five shillings for being drunk, or six hours in the stocks.

These penalties were gradually increased as the puritans gained more influence. Finally he also ruled that all town and village officers were sworn to act as an informer against any tipsy man.

For the first time these duties also included bona-fide travellers. In 1610 he tried to get parliament to agree to a national tax on beer, which failed, but they did agree, in 1614, to a duty on tax on malt used by London brewers.

In 1627, under the rule of **Charles I** (1625 - 49), anyone running an ale house without a licence was subject to a fine of a guinea or to be whipped, with a second offence earning a month in prison. Many pubs at the time were still run by women and so the punishment was often inflicted upon her husband.

In 1635 taverners - who until now had only been allowed to sell wine - were now permitted to sell beer.

In 1637 there was an attempt to stop publicans making their own beer, using the common brewers for their supplies instead.



‘SOME MPS TRYING TO ADDRESS THE HOUSE OF COMMONS WERE TOO INEBRIATED TO TALK COHERENTLY’

Eventually as the civil war broke out the King put new duties on ale, beer, cider & perry to pay for his army. Unsurprisingly the puritans did the same. Charles was lodging at the Saracen’s Head in Southwell when he surrendered himself to the Scots, who in turn ‘sold’ him to the parliamentary army.

The puritans - not renowned for their tolerance - also imposed fines for drinking on the Sabbath, drinking after 9pm, being drunk and for serving someone who was drunk. Bans were also imposed on maypoles, church ales, cock fighting, and possibly even Christmas, while church attendance became compulsory.

Laws relating to short measures were still enforced - in 1658 there is a record ‘William Snell hath sold beere in unlawfull measures called black jacks, that is to say six jacks at one penny a peece, the same measure not conteyning a full quart, therefore he is amerced XI^s’ - a fine of eleven shillings.

In an interesting aside, in 1650 there was a report - ‘at Milton in Barkshire a company of royalists at an alehouse ... being drunk, they out of zeale of affection to their King ... would drink his health in blood, and to this effect unanimously agreed to cut a piece of their buttocks, and fry the flesh that was cut off on a grid iron’. Apparently one of their wives called the authorities and the men were taken to nearby Newbury

and bound over to appear before the next quarter sessions. Their final outcome is not known but I doubt it was pleasant. The pub was then called The Dogge but is now known as The Plum Pudding, with Milton now being in Oxfordshire.

Before fleeing the country **Charles II** (1660 - 85) spent a night at the George in Brighton and his skill at hide and seek has spawned many pubs called the Royal Oak. He brought a lighter touch to regulations and perhaps this cavalier was laughing because parliament gave him an excise on beer to replace all the feudal dues monarchs had previously enjoyed.

In 1655 there are records of a pub sign in Norfolk that extended over the road and had cost £1000, and which included many life sized figures, images etc and was thought to be the most expensive sign ever produced.

On one occasion in 1666 Charles called on a blacksmith in Dorset and asked for a drink. On being told the smith didn’t have a licence he granted one on the spot - making the Smiths Arms in Godmanstone the smallest pub in Britain.

The King had not always been so fair-minded; following his restoration the landlord of the White Hart in Abingdon, Berkshire, was convicted of regicide, executed and all possessions, including the pub, seized by the crown. His offence had

been being the Clerk of the Court that had tried and passed a sentence of death on Charles I.

Following the great fire in London of 1666 the King ordered that ‘all those trades which are carried on by smoak’ - such as brewing - should ‘inhabit together’ to reduce the risk of future fires.

There was an act in 1667 ordering ‘that in all the streets no signboard shall hang across the street’.

During his reign the Turnpike Acts started which encouraged road improvements and, in turn, increased the demand for coaching inns etc.

Following **James II**’s brief reign (1685-88), when the brewer’s charter was again replaced, **William II** and **Mary II** (1688 - 1702) took the throne. They, **Anne** (1702-14) and **George I** (1714 - 27) continued the policy of tinkering with beer duties leading to the bizarre situation whereby very strong gin became much cheaper than beer. This led to mass public drunkenness including - and this is hard to believe - a situation whereby some MPs trying to address the House of Commons were too inebriated to talk coherently!

Part Four of this article will appear in our next issue.

BRANCH VISIT

A BRISTOL PUB CRAWL

A group of us normally attend the GBBF in London, but as it was cancelled in 2024 we decided to go to Bristol for the day. Well - what a great place to go for a superb range of ales and ciders!

Map in hand with a real ale trail to follow, Di and Dave Glass set off with a crew of trusty beer hounds...



First stop was The Kings Head on Victoria Street, renowned for its historic interior and tramcar bar. Reopening in 2022 after being shut for two years during the COVID pandemic, many of the fixtures and fittings are said to be the oldest in the country and are listed in CAMRA's national inventory of historic pub interiors. The ales on tap ranged from Good Chemistry, Track, Kelham Island and Thornbridge.

Then it was off to the Cornubia on Temple Street, an 18th century building. There is a lot of development in the surrounding area, which makes this pub a little gem to find. Good range of ciders including Harry's Scrummage, Taunton Cider Company First Press and Broadoak Perry. Ales included Park Hill Porter and Reet Ale from Blue Bee Brewery, Red Dog Ale's Silent Joker, Incredible Brewing Company's Black IPA, and Cornubia SO.

Next Stop was the Seven Stars Inn on Thomas Lane. This was once an Ushers pub, but now they had four ales on tap from the Twisted Oak Brewery. Cider was

from the Bristol Cider Co. Nice old fashioned pub - no frills but friendly staff with a nice range of beers. CAMRA discount was offered too.



Then on to The Bridge on Passage Street which had an amazing mural of Jimi Hendrix on the side of the building. Small pub, but plenty of tables outside and full of friendly customers inside. Ales ranged from Moor, Indigenous and Quantock breweries, with cider from Brislington and Ilford.

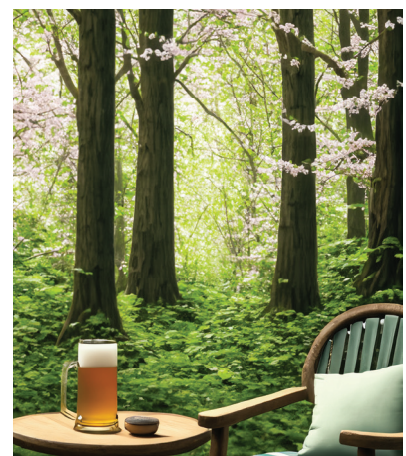
Advertise your business in the **White Horse Wanderer**

If you'd like to advertise your business in future issues of this magazine, please get in touch by sending us an email to press@whitehorse.camra.org.uk and we'll get back to you with further information.

We've got some great advertising rates for local businesses, and we can arrange discounts for placing advertisements in multiple issues.

The magazine is distributed to many pubs in the White Horse catchment area, and is seen by hundreds of pub visitors. All adverts are in full colour and the magazine is professionally printed. Rates for advertising are as follows:

Full page: £75.00
Half page: £50.00
Quarter page: £25.00



If you don't wish to advertise, but feel you have a newsworthy article or story for us, please do get in touch!



Moving on then to The Stag & Hounds on Old Market Street which is an historic Grade II listed building. The ales were all from the Bristol Beer Factory - no complaints here!

A bit of a walk followed to the next stop, which was the Left Handed Giant Brewpub on Hawkins Lane, which was absolutely buzzing. Huge selection on the menu, all of which are brewed on the premises. Mainly craft kegs on offer, but with a couple of casks thrown in too. It's certainly worth a visit to see such a vibrant atmosphere in a time where we are losing so many independent breweries and their pubs.

We thought we'd better be sensible and go and seek some nourishment, so Wetherspoons it was. Off we went to The Commercial Rooms on Corn Street, which had a good range of ales from Beartown, Moorhouse's, Grainstore, Otter, and Limestone. Suitably nourished we headed off to The King Street Brew House on Welsh Back. This occupies a prominent position on one end of Bristol's foremost beer drinking street. There is plenty of seating outside on the cobbles of King Street as well as a huge seating area inside. They offer their own King Street Ales, as well as Bristol Beer Factory and Arbor.

Not far to go to the next hostelry, as it's literally opposite! The Llandoger Trow is also a Grade II listed building and is steeped in history dating back to 1664. It has an impressive selection of 28 keg beers including UK, Czech and German varieties. Cask ales on offer ranged from Marble, Track, Taylor's, Daleside, and Wye Valley. A still cider was also on offer.

Last port of call on our way back to the station was The Portwall Tavern on Portwall Lane. It would be hard to miss this pub as it's quite a vibrant shade of blue! Again, a nice friendly atmosphere in both the inside and outside drinking areas. Ales on offer were from Hop Union, Cotleigh, and Gloucester Brewery.

All in all we had a fabulous day exploring the beer haven of Bristol. The question is, where do we go next?



Interested in joining our CAMRA branch?

Be part of the CAMRA story - real ale is just the beginning...



Membership with CAMRA includes: A welcome pack and membership card. Award winning quarterly BEER magazine. Access to our extensive Learn & Discover online educational resources. Local branch activities and volunteering opportunities. A benefits package that includes £30 worth of CAMRA real ale vouchers, discounted entry to many of our 180 festivals, 3000+ pubs offering local discounts and CAMRA book shop discounts. Start your CAMRA story now at camra.org.uk/join

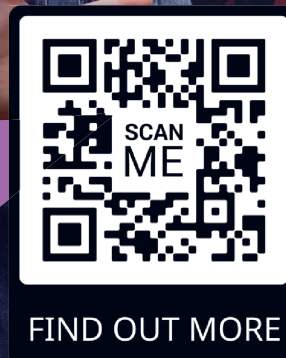
Be part of the CAMRA Story

Real ale is just the start...

Our story is your story.
So join us in supporting
everything from pubs and
drinkers rights, to licensees
and breweries, uniting us
in the story we all love.

To thank you for being a hero
in our story, you receive great
membership benefits, such as
£30 of beer vouchers,
quarterly BEER magazine,
access to the online news
platform What's Brewing,
partner benefits and discounts...
just a few perks of joining us.

Join the CAMRA story
camra.org.uk/join



Real stories, real people, real ale

PUB AND BREWERY NEWS



The Black Horse, East Hanney

Following the closure of The Chequers, Charney Bassett, landlord and landlady Ian and Jacqui have taken the reins of The Black Horse, East Hanney, which reopened under their leadership in November 2024. When we visited, there were three real ales on tap, all of excellent taste and quality. The pub had a nice, vibrant buzz - and it was good to see how popular it was, especially on a Tuesday evening. We didn't eat, but the food looked and smelled amazing! All of us at White Horse CAMRA wish you and your team success in your new venture.

The Extraordinary Hare, West Hendred, has reopened following a long period of closure. We haven't visited as a branch, but members report that it is food-focussed. No current website or social media pages exist at the time of this issue going to press, so opening hours and beer range are as yet unknown.

The Hatchet, Childrey, is now closed. It was opening under reduced hours for a time due to landlord Ian becoming unwell, but just before we went to press we were informed that he had sadly passed away. The future of the pub is unknown at this time. We pass our deepest sympathies on to Ian's family and all who knew him.

The Sparsholt, Sparsholt, (formally The Star Inn) closed its doors permanently in December 2024. We have no further news on its future.

The Chequers, Charney Bassett, remains closed after Ian and Jacqui's departure. As far as we know it is still up for sale after a previous sale agreement failed to occur. We will await further news.

King Alfred's Head, Wantage. The previous tenants have left the pub, and landlords Punch Taverns are reopening it under their new Management Partnership agreement scheme. At time of going to press, the pub is closed whilst renovation works appear to be underway. No news yet on reopening dates or range of beers.

The Crown, Shrivenham remains closed after permanently shutting its doors in 2024. It is currently up for sale, with a planning application for two houses submitted.

Barrington Arms, Shrivenham. Trust Inns have purchased the freehold on the Barrington Arms which we can only see as positive news for the pub.

The King & Queen, Longot fully reopened in October 2024 under new management. The branch have not yet paid a visit to the pub, but by all accounts it continues to provide quality ales and food. Further updates to follow.

Abingdon Arms, Wantage still remains closed following its purchase by a local resident last year. No news on whether it will reopen as a pub.





THE
SHOULDER
WANTAGE

Where Community and Craft Come Together!

Come and sample our huge range of 16 beers

Modern en-suite bedrooms

Open Mic Every Tuesday

Quiz Every Thursday

Find us, just a short walk from the market square at
38 Wallingford Street, Wantage OX12 8AX



Tel: 01235 767158 / www.thesoulder.pub



FOCUS ON... THE PLOUGH

We've awarded The Plough in West Hanney our certificate for Country Pub Of The Year on a number of occasions, and it's definitely well deserved!

Tenants Owain Jones, an award winning General Manager, and Luke Mayor, an award winning Head Chef make a formidable team as the faces of The Plough.

The Plough is a picturesque, friendly, 16th-century thatched pub, located opposite the church. Sold in 2015 by Punch Taverns to a local community group, it has been refurbished and serves four changing beers. A cosy beamed and alcoved split level bar with open fire serves the best of local and national real ales. A separate dining room serves top-notch traditional British food - although you can also dine in the bar or outside areas. It is the hub of the community and most of the local clubs meet here from time to time. In summer Aunt Sally is played in the local league.

The Plough has a lovely outside space split into two areas. One open to the elements - perfect for those lazy summer days, and a covered pavillion attached to the bar area providing ample extra seating and also a TV where sporting events are often shown.



Although the pavilion is enclosed, you can still see outside and feel the heat from the sun, giving it a real "inside/outside" vibe. In the colder months patio heaters are lit to provide the perfect cosy atmosphere.

The food and drink at The Plough is always top quality, and the atmosphere caters to all - from a quick pint with friends at the end of the working day, a relaxed lunch, or a romantic meal for two - The Plough has it all.

A REAL COMMUNITY ASSET

Many pubs claim to be the hub of the community, but The Plough really is. Owain and his team go above and beyond to make everyone feel welcome, and help the community whenever possible. During recent flooding when the village was cut off, they provided free food for children and put a selection of films on the TV for them to enjoy whilst their parents were working and unable to get childcare.



THE PLOUGH
HANNEY

Check out their Facebook page at [ploughathanney](https://www.facebook.com/ploughathanney)
The Plough often hosts regular events and offers so you can be sure you won't miss out!

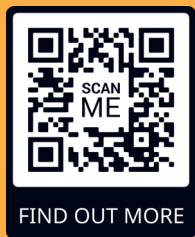


If you haven't yet visited The Plough, Owain, Luke and the team would love to see you! The beer is fantastic and the food is competitively priced and is among the best in the area.

Open from 12pm every day, you can contact them on 01235 868987 or book a table using their website at [theploughathanney.co.uk](https://www.theploughathanney.co.uk)

Join CAMRA today

Your support matters



Join with the direct debit form below, online at join.camra.org.uk or scan the QR code to get started.



Enter your details and complete the Direct Debit form below and you will receive 15 months membership for the price of 12 and save £2 on your membership subscription.

Alternatively you can join online at join.camra.org.uk or call 0330 153 9924[†] (Weekdays 9am to 5pm).

Join today	Direct Debit	Non DD
Single Membership (UK)	£30.50 <input type="checkbox"/>	£32.50 <input type="checkbox"/>
Under 26 Membership	£22.00 <input type="checkbox"/>	£24.00 <input type="checkbox"/>
Joint Membership (At the same address)	£38.50 <input type="checkbox"/>	£40.50 <input type="checkbox"/>
Joint Under 26 Membership	£30.00 <input type="checkbox"/>	£32.00 <input type="checkbox"/>

Concessionary rates are available only for Under 26 Memberships

Please indicate whether you wish to receive our quarterly award winning magazine **BEER** by email OR post: Email Post

I wish to Opt-in to General Communications Branch Communications. We will ask for your consent in future communications and you can log-in to account.camra.org.uk and edit your membership preferences at any time.

I wish to join the Campaign for Real Ale, and agree to abide by the Memorandum and Articles of Association which can be found on our website.

Signed
Date Applications will be processed within 21 days

Your details (*all fields compulsory)

Title* Surname*
Forename(s)*
Date of Birth (dd/mm/yyyy)*
Address*
.....
Postcode*
Email address*
Daytime Tel

Partner's Details (if Joint Membership)

Title Surname
Forename(s)
Date of Birth (dd/mm/yyyy)
Email address

We will process your data in accordance with our Privacy Policy which can be found at camra.org.uk/privacy-policy.

We will only send you communications you have consented to, see above tick boxes, and service-based communications. To manage your full set of communication preferences, please visit your online member account at account.camra.org.uk.

Direct Debit Instruction

Please fill in the whole form using a ball point pen and send to:
Campaign for Real Ale Ltd, 230 Hatfield Road, St. Albans, Herts AL1 4LW
Email: membership@camra.org.uk Telephone: 0330 153 9924[†]



Name(s) of Account Holder

Bank or Building Society Account Number

Branch Sort Code

Billing Address

Postcode
Payments will show as CAMRA Membership on your bank statement.

I understand that CAMRA has partnered with Stripe, who collects Direct Debits on behalf of CAMRA and confirm that I am the account holder and the only person required to authorize debits from this account.

Signature



The data you provide will be processed in accordance with our privacy policy in accordance with the General Data Protection Regulations. Calls from landlines charged at standard national rates, cost may vary from mobile phones.

This Guarantee should be detached and retained by the payer.

The Direct Debit Guarantee



This Guarantee is offered by all banks and building societies that accept instructions to pay Direct Debits.

If there are any changes to the amount, date or frequency of your Direct Debit, Stripe will notify you 2 working days in advance of your account being debited or as otherwise agreed. If you request Stripe to collect a payment, confirmation of the amount and date will be given to you at the time of the request.

If an error is made in the payment of your Direct Debit, by Stripe or your bank or building society you are entitled to a full and immediate refund of the amount paid from your bank or building society. If you receive a refund you are not entitled to, you must pay it back when Stripe asks you to.

You can cancel a Direct Debit at any time by simply contacting your bank or building society. Written confirmation may be required. Please also notify us. Setup of Direct Debit Instruction with Stripe on behalf of CAMRA.

CHAIRMAN'S REPORT - by Simon Moore

As I approach the end of my first year as chair for the White Horse branch of CAMRA, it's definitely time to reflect.

As some of you are probably aware, I took over the position of chair on a temporary basis just over a year ago after Ian stepped down from the position, and was then politely persuaded to put my name forward for another year, and here I am! Although I've been a CAMRA member for a while, I was unaware of the work that local CAMRA branches do on a regular basis - from helping out at beer festivals to voting for Pub of the Year, to collating entries for WhatPub and the Good Beer Guide. I was thrown into this at the deep end, and I have to say that without the unwavering support and help from all the other committee members, and mentoring from our previous chairman, Ian, I'd still be floundering at the deep end!

A local CAMRA branch is more than just an offshoot of a national organisation. It's a place where like-minded individuals can get together not just to discuss branch business, but also to enjoy time socially. Getting out and about visiting some of the amazing pubs in our area is probably something that would still be on my "to do" list if it weren't for our local branch.

Our branch has over 240 active members - only a few of which regularly make it to the branch meetings and socials. And I've got to say, those who haven't been out with us are really missing out! Branch meetings happen every month (normally on the second Tuesday), start at 7.45pm and only usually last an hour. It's a chance to visit pubs that you may not normally visit, and enjoy a beer or two with a great bunch of people.

You can be as active a member as you want to - there really is no pressure. However, if you'd like to take a more active role in the branch by serving on

a position within the committee, you'd be more than welcome! Your views can help shape the branch in years to come. CAMRA has recently updated how it views regions in the UK, which means that if we don't have a White Horse CAMRA branch, it's highly unlikely that pubs in the area will ever appear in the Good Beer Guide again - which is vital for getting enthusiastic beer tourists to our local establishments.

Many of the pubs in our area are independently run. Not being tied to a brewery does have massive advantages - especially when it comes to sourcing beer and cider - but not having the financial backing or support means that they rely on increasing trade to stay open. Just looking at the list of closed pubs earlier in this issue is truly heartbreaking. We all know the national statistics on pub closures, but when so many happen to be in your local area it's a real eye-opener. All these local pubs need our support - both as customers and as CAMRA members. I really do encourage you to come along to the meetings - supporting these local pubs may only be a small gesture, but believe me, as a pub owner and manager for many years, the smallest gesture can make a massive difference.

As we go to press, we're finalising our eight allocated entries for the next edition of the Good Beer Guide. Thank you to all of you who used our new process to cast your votes online. This has been a frustrating process for me personally, because as I manage a pub in the area, I'm excluded from all votes and final decisions! After these have been submitted to CAMRA, we'll then have the process of selecting our Pub of the Year, Cider Pub of the Year and Country Pub of the Year. If you're a White Horse CAMRA member, keep a look out for an email showing you how to vote.

Right - I think that's it from me for this issue. All this typing has made me thirsty.... See you all soon!



Interested in joining us? It's easy! If you're not a current CAMRA member, simply fill in the form opposite and post it off, visit join.camra.org.uk or give them a call on 0330 153 9924.

If you are a current member, just come along to one of our socials or meetings and see what we're up to next!

Oak Taverns



LOCAL PUB COMPANY OPERATING AWARD WINNING PUBS



PRINCES RISBOROUGH



WHEATLEY



CHINNOR



HADDENHAM



YARNTON



SUTTON COURTENAY



MARCHAM



BICESTER



THAME



WHITCHURCH-ON-THAMES



WALLINGFORD



WANTAGE



FARINGDON

For more information please visit

www.oaktaverns.co.uk

Oak Taverns Ltd, 8A Buttermarket, Thame, Oxon.OX9 3EW